

Cabinet version

## **South Oxfordshire District Council**

### **Corporate Plan 2020 – 2024**

#### **APPENDIX 1 FOR THE ENGAGEMENT REPORT**

Appendices A – F for the South Oxfordshire District Council Corporate Plan 2020 – 2024 engagement summary report. The full report and appendices are available to view on our Corporate Plan [website page](#).

**SEPTEMBER 2020**

In this document:

**APPENDIX A – BACKGROUND TO THE ENGAGEMENT**

**APPENDIX B – ENGAGEMENT METHODOLOGY**

**APPENDIX C – COMMUNICATION**

**APPENDIX D – SURVEY**

**APPENDIX E – DEMOGRAPHIC DATA**

**APPENDIX F – QUANTITATIVE DATA**

In a separate document (due to file size):

**APPENDIX G – FULL LIST OF COMMENTS RECEIVED**

**Footers** need fixing from page 41

## APPENDIX A – BACKGROUND TO THE ENGAGEMENT

The following information is taken from the online survey introduction pages.

### **Working towards a thriving future for South Oxfordshire**

Have your say on the six priority themes and illustrative projects in the Corporate Plan 2020 - 2024. Councillors have proposed a set of priority themes for the council over the next few years. You will recognise ideas from promises made by Councillors during their campaign for the May 2019 local elections.

The survey is open to all those living and working in South Oxfordshire, as well as council staff and councillors; we recognise that collaboration between all of us will help to build a better plan.

Please tell us if you think any themes or projects are missing or need to be expanded on, and let us know if we are on the right track. We are looking for feedback on the council's priorities particularly in the context of the challenges ahead for Local Government; for example, we are still working to support our communities through the COVID-19 pandemic and planning for recovery, whilst facing uncertainty about our funding in the future.

**Your feedback will help councillors finalise the Corporate Plan and focus on what they and those living and working in South Oxfordshire believe will make the district a better place for businesses, for families and for future generations.**

The survey is open until **midnight on Thursday 13 August 2020**.

We will review the priorities in the plan every year. This will help to ensure they remain up to date and relevant during the period that they cover, balancing this with our budgets and the council's climate objectives.

### **Next steps?**

Your feedback will go in a report to council managers and Cabinet Members and will be used to inform the preparation of the final content for the South Oxfordshire Corporate Plan. The report will be available on our website.

You do not have to answer any questions that you do not want to. Any personal information supplied to us within your comments that could identify you will not be shared or published in the report. Further information on data protection is available in our privacy statement.

If you have any queries about this survey or require it in an alternative format please email the consultation and community engagement team on [haveyoursay@southoxfordshire.gov.uk](mailto:haveyoursay@southoxfordshire.gov.uk) or call 01235 422425. An **Easy Read version of the survey** is available to download and view online, using this link. If you want to discuss the Corporate Plan and its development please contact Michelle Wells on [Insightandpolicy@southoxfordshire.gov.uk](mailto:Insightandpolicy@southoxfordshire.gov.uk) or call 07917 088341.

**By clicking 'Next page', you are confirming you are happy for your answers (all anonymous) to be used in the survey feedback report.**

**A save and continue option is available so that you can come back to a partially completed survey. Your responses may be included as valid answers, even if you do not click "Submit" at the end of the survey.**

We would like your feedback on the draft South Oxfordshire Corporate Plan themes, projects and actions.

**The proposed themes are:**

Theme 1: Homes and infrastructure that meet local needs

Theme 2: Improved economic and community well-being

Theme 3: Action on the Climate Emergency

Theme 4: Protect and restore our natural world

Theme 5: Investment and innovation that rebuilds our financial viability

Theme 6: Openness and accountability

You can read more about each theme, why it is being put forward and what we hope to achieve. You can also find out more about some of the actions and projects that are being proposed. For each theme, you will have the opportunity to give your feedback and suggestions.

## APPENDIX B - ENGAGEMENT METHODOLOGY

The engagement methodology consisted of the following:

- an email notification to the councils' planning and corporate consultee databases, to provide a link to a video of Councillors summarising this engagement and each theme, along with a link to the survey and details of how to comment. The notification was issued through the online engagement system SmartSurvey. A total of 4,716 email notifications were sent out. A copy of the email notification can be found at Appendix C;
- an email notification with details as above, to the councils' community grants database. A total of 533 email notifications were sent out;
- an email notification with details as above, to all South Oxfordshire towns and parishes. A total of 86 email notifications were sent out;
- Duplication of contacts between the above databases have not been removed as they may wish to respond in their different capacities;
- a link to the survey and details of how to comment was sent to 1, 012 contacts on the South and Vale Business support database and a further 50 community groups through the Community Enablement team;
- a letter to those consultees who opted in for postal correspondence. This included details of the short video of Councillors summarising this engagement and each theme, along with a link to the survey, details on how to obtain a hard copy of the survey and details of how to comment (see the email notification as an example of the text used at Appendix C). A total of 283 letters were issued;
- informing South Oxfordshire district councillors through our internal councillor e-newsletter;
- informing South Oxfordshire district council staff through our internal all staff email communications;
- a video of Councillors talking about the engagement and each of the six suggested themes proposed for the South Oxfordshire Corporate Plan 2020 – 2024;
- updating the website and publishing the video link, background information and a link to the online survey;
- a focused online survey, offering participants opportunity to indicate how important they consider each of the six themes and their corresponding illustrative projects to be and comment on each theme in a free text box. A free text box at the end of the survey to catch any other comments was added on 28 July. A copy of the survey can be found at Appendix D;
- an Easy Read version of the survey for online viewing or printing. A copy can be found at Appendix D;
- a press release was issued on the engagement launch date, and social media messages (Twitter and Facebook) posted during the engagement period to further publicise and encourage wide participation from the public. Facebook received 6,140 views and Twitter 643 views during the engagement period;
- a four-week engagement period for submitting responses between 16 July and 13 August 2020;

- the engagement was carried out in conformity with our public engagement charter<sup>1</sup>.

### Reporting methodology

- a total of 932 completed responses were received. 308 partial responses were included as at least one of the main survey questions was answered. 554 people looked at the survey but didn't answer any of the questions;
- 1 responder completed the survey and also emailed with further comments, which were added manually to the survey as a separate response.
- 4 of the 932 responses were received by email; 1 member of the public, 1 organisation and 2 community groups. These were added manually to SmartSurvey to the relevant parts of the survey or to the 'Anything else?' section as a single response;
- 1 response to the Easy Read survey version was received by an organisation
- Responses manually added to the 'Anything else?' section as a single response were moved to other sections of the report for analysis if they related to that section;
- a total of 5,431 comments were received. Most of the comments contained several comments or points within them and, where this is the case, each comment or point has been summarised individually for analysis purposes. Therefore, the total number of actual comments received is much higher.
- Respondents were also asked which of the words used to describe each theme particularly resonate (e.g. which words mean something to them), and which words are not clear or are confusing. A range of comments and suggestions were received to this question. A summary of the ten most frequently mentioned words that resonate, and words that are not clear, using a sample of up to 100 for each question, is provided below for each theme. Where a frequently mentioned word has the same percentage frequency as the tenth word, they are combined in the same line in the table. The background to each of the themes and the reporting methodology are available to read at Appendix A.
- a summary of the comments is included in the main engagement report;
- any personal information supplied to us within the comments that could identify anyone has been redacted and will not be shared or published in the report. Further information on data protection is available in our general consultations [privacy statement](#) on our website;
- some spelling, grammatical and punctuation errors in the original comments raised were corrected in the main body of this report; a full list of unedited comments can be found at Appendix G.

<sup>1</sup> <http://www.southoxon.gov.uk/about-us/have-your-say/our-commitments-public-engagement>

## APPENDIX C – COMMUNICATION

A copy of the email notification sent out to consultees in South Oxfordshire is below. The text was adapted for the letter sent to those who opted to receive postal notifications.

### **Subject: Help shape our work towards a thriving future for South Oxfordshire**

Dear [NAME]

If you had a say in what's most important for the council to focus on what would you say? Would it be tackling the climate emergency, protecting and restoring our natural world, helping businesses to thrive, or healthy communities? These are all things that councillors at South Oxfordshire District Council regularly have to debate and consider for the local community.

Councillors have identified six main themes for what they feel are the most important areas they need to focus on. They would like to know how residents, council staff and local organisations such as community groups, businesses and town and parish councils feel about these themes. The main areas that you will be asked to comment on are:

- Theme 1: Homes and infrastructure that meet local needs
- Theme 2: Improved economic and community wellbeing
- Theme 3: Investment and innovation that rebuilds our financial viability
- Theme 4: Action on the Climate Emergency
- Theme 5: Openness and accountability
- Theme 6: Protection and restoration of our natural world

The survey, launched today 16 July and running until midnight on 13 August, doesn't just focus on the here and now but is looking for feedback on the council's priorities over the next four years.

Please give us your views on these themes by clicking here [SURVEYLINK]

The link above is uniquely tied to this survey and to your email address. If you would like to forward this message to any interested parties, please refer them to the generic link [here](#).

The responses gathered will help councillors finalise their mission statement, known as a Corporate Plan. The plan will enable them to focus the council's work on what they and those living and working in South Oxfordshire believe will make the district a better place for future generations.

Covid-19 has changed the way many of us view things and our priorities for ourselves and those around us. Given this opportunity to adapt and change, we want to know what you think about our plans for the future, to make sure South Oxfordshire is the district our communities want it to be.

If you have any queries about this survey, require the engagement document in printed version, or in an alternative format (for example large print, Braille, audio, email, Easy Read and alternative languages), please email [haveyoursay@southandvale.gov.uk](mailto:haveyoursay@southandvale.gov.uk) or call 01235

422425.

Alternatively, if you want to give your feedback by telephone please call 01235 422425.

If you have a query regarding the Corporate Plan, please email [insightandpolicy@southandvale.gov.uk](mailto:insightandpolicy@southandvale.gov.uk) or call 07917 088341.

Finally, when you next have a tea break, [here's the link](#) to a video of councillors talking about the main themes in the Corporate Plan, to watch with your cuppa.

Kind regards

Consultation and Community Engagement Team  
South Oxfordshire District Council

---

**Opt out:** If you do not wish to receive further emails like this from us, please click the link below, and you will be removed from the relevant mailing list. Please note, we may still need to contact you for certain consultations if we have a legal obligation to do so. <http://survey.southandvale.gov.uk/s/Remove/>



## APPENDIX D – SURVEY

A copy of the paper comment form is below; it is based on the online survey. An Easy Read version of the survey was also produced and is included below.

# Comment form for the Corporate Plan for South Oxfordshire 2020-2024

## Introduction

### Working towards a thriving future for South Oxfordshire

Have your say on the six priority themes and illustrative projects in the Corporate Plan 2020 - 2024. Councillors have proposed a set of priority themes for the council over the next few years. You will recognise ideas from promises made by Councillors during their campaign for the May 2019 local elections.

The survey is open to all those living and working in South Oxfordshire, as well as council staff and councillors; we recognise that collaboration between all of us will help to build a better plan.

Please tell us if you think any themes or projects are missing or need to be expanded on, and let us know if we are on the right track. We are looking for feedback on the council's priorities particularly in the context of the challenges ahead for Local Government; for example, we are still working to support our communities through the COVID-19 pandemic and planning for recovery, whilst facing uncertainty about our funding in the future.

*Here's a clip from the leader of the council, Cllr Sue Cooper, asking for your feedback.*

### VIDEO

Your feedback will help councillors finalise the Corporate Plan and focus on what they and those living and working in South Oxfordshire believe will make the district a better place for businesses, for families and for future generations.

**The survey is open until midnight on Thursday 13 August 2020.**

We will review the priorities in the plan every year. This will help to ensure they remain up to date and relevant during the period that they cover, balancing this with our budgets and the council's climate objectives.

### How to comment

Comments can be made by:

- completing this comment form and posting or emailing it back to us (addresses below)
- emailing **haveyoursay@southandvale.gov.uk**
- writing to us using our freepost address: Freepost SOUTH AND VALE CONSULTATIONS (no stamp is needed)



- using our online comment form, which is available here:  
<https://survey.southandvale.gov.uk/s/Southcorporateplanfeedback/>

### Next steps?

Your feedback will go in a report to council managers and Cabinet Members and will be used to inform the preparation of the final content for the South Oxfordshire Corporate Plan. The report will be available on our website: [southoxon.gov.uk/about-us/how-we-work/corporate-plan](https://southoxon.gov.uk/about-us/how-we-work/corporate-plan)

You do not have to answer any questions that you do not want to. Any personal information supplied to us within your comments that could identify you will not be shared or published in the report. Further information on data protection is available in our general consultations privacy statement on our website: [southoxon.gov.uk/about-us/have-your-say](https://southoxon.gov.uk/about-us/have-your-say).

If you have any queries about this survey or require it in an alternative format please email the consultation and community engagement team on [haveyoursay@southandvale.gov.uk](mailto:haveyoursay@southandvale.gov.uk) or call 01235 422425.

If you want to discuss the Corporate Plan and its development please contact Michelle Wells on [Insightandpolicy@southandvale.gov.uk](mailto:Insightandpolicy@southandvale.gov.uk) or call 07917 088341.

## Your priorities

We would like your feedback on the draft South Oxfordshire Corporate Plan themes, projects and actions.

The proposed themes are:

**Theme 1: Homes and infrastructure that meet local needs**

**Theme 2: Improved economic and community well-being**

**Theme 3: Action on the Climate Emergency**

**Theme 4: Protect and restore our natural world**

**Theme 5: Investment and innovation that rebuilds our financial viability**

**Theme 6: Openness and accountability**

You can read more about each theme, why it is being put forward and what we hope to achieve. You can also find out more about some of the actions and projects that are being proposed. For each theme, you will have the opportunity to give your feedback and suggestions.

1. For each of the proposed six themes in the Corporate Plan, please tell how important you consider each one to be. You can use the sliding scale below by moving the scale left and right, with 1 on the left being least important and 5 on the right being most important.

Theme 1: Homes and infrastructure that meet local needs

Theme 2: Improved economic and community wellbeing

Theme 3: Action on the Climate Emergency

☐

Theme 4: Protect and restore our natural world

☐

Theme 5: Investment and innovation that rebuilds our financial viability

☐

Theme 6: Openness and accountability

☐

**2. In your own words, describe a happy and successful community:**

## Theme 1: Homes and infrastructure that meet local needs

### VIDEO

#### Why this theme?

The average price of a home is many times higher than the average salary, particularly for the young, and renting is also expensive. The pressure to build new homes in our district sometimes outweighs local wishes. Infrastructure – things like roads, schools and GP surgeries – have not kept up with housing development. Too many houses being built today are not fit for a low-carbon future.

#### So we will...

...strive to ensure that new homes and infrastructure in South Oxfordshire meet local needs, are sustainable, zero carbon build and operation and high quality in design. We will provide homes that people can afford to live in. New developments will be accessible with walking, cycling and public transport a priority. Neighbourhood plans and local participation will sit at the heart of our planning process. We will work with partners to ensure that development is appropriate for our communities.

#### How will we do this?

We have come up with some actions and projects that illustrate how we can achieve this theme.

**3. Your answers to this question will tell us which actions and projects identified to help achieve this theme are important to you. This will help us decide how best to prioritise our work and budgets over the next four years.**

**How important are the following illustrative actions and projects to you?**

	Very important	Important	Neither important nor not important	Of little importance	Not important
Didcot Garden Town priority projects as identified by the Advisory Board, specifically a sustainable plan to redevelop the Didcot Gateway site, a public transport and active walking and cycling network, community facilities and accessible green spaces for Didcot residents	<input type="checkbox"/>	<input type="checkbox"/>	<input type="checkbox"/>	<input type="checkbox"/>	<input type="checkbox"/>
The transformation of Berinsfield into a thriving Garden Village with improved facilities that are developed in line with the community's needs and aspirations	<input type="checkbox"/>	<input type="checkbox"/>	<input type="checkbox"/>	<input type="checkbox"/>	<input type="checkbox"/>
New council-owned homes with a focus on quality of design, affordability and local requirements	<input type="checkbox"/>	<input type="checkbox"/>	<input type="checkbox"/>	<input type="checkbox"/>	<input type="checkbox"/>
Support and encouragement for the retrofit of our existing housing stock for low-carbon performance and to eliminate fuel poverty	<input type="checkbox"/>	<input type="checkbox"/>	<input type="checkbox"/>	<input type="checkbox"/>	<input type="checkbox"/>
Elimination of homelessness in our District and bringing empty properties back into use	<input type="checkbox"/>	<input type="checkbox"/>	<input type="checkbox"/>	<input type="checkbox"/>	<input type="checkbox"/>
	<input type="checkbox"/>	<input type="checkbox"/>	<input type="checkbox"/>	<input type="checkbox"/>	<input type="checkbox"/>

	Very important	Important	Neither important nor not important	Of little importance	Not important
Ensuring that our teams are ready to access or signpost to any Government schemes or funding that is made available					
New homes are future-proofed, meeting the highest environmental standards and enhancing nature through sensitive, high quality design	<input type="checkbox"/>	<input type="checkbox"/>	<input type="checkbox"/>	<input type="checkbox"/>	<input type="checkbox"/>
Spatial planning embeds public health, wellbeing and sustainability	<input type="checkbox"/>	<input type="checkbox"/>	<input type="checkbox"/>	<input type="checkbox"/>	<input type="checkbox"/>
Changes over time in our stock of homes meet local needs	<input type="checkbox"/>	<input type="checkbox"/>	<input type="checkbox"/>	<input type="checkbox"/>	<input type="checkbox"/>
Sustainable transport solutions prioritise walking, cycling and public transport to reduce car dependency and air pollution	<input type="checkbox"/>	<input type="checkbox"/>	<input type="checkbox"/>	<input type="checkbox"/>	<input type="checkbox"/>

**4. We would like to understand which of the words used to describe this theme particularly resonate with you (e.g. which words mean something to you). We also want to know which words are not clear or are confusing?**

These words resonate with me:

These words are not clear to me:

**5. Please use the space below to tell us if you have any comments on this theme and the actions and projects proposed to deliver it? Is there anything missing from this theme or does it need to be expanded on?**

## Theme 2: Improved economic and community wellbeing

### VIDEO

#### Why this theme?

South Oxfordshire has a large number of small and micro businesses, and is well placed to adapt to changes in the economy, but support will be needed for it to remain a healthy and vibrant place to live and work. The Coronavirus pandemic has shown the strength of the community but there are areas of isolation and deprivation in our district, and the benefits of access to culture, leisure and community for all has been made clear.

#### So we can...

...reimagine our high streets, helping independent small businesses to thrive and to encourage cultural well-being for all. We will encourage clean local economic development and support our business hubs, centres of scientific excellence and our educational establishments to become leaders in sustainable technology, innovation and enterprise. We will help our community groups to strengthen cohesion, reduce social isolation and tackle areas of deprivation.

#### How will we do this?

We have come up with some actions and projects that could help us achieve this theme.

**6. Your answers to this question will tell us which actions and projects identified to help achieve this theme are important to you. This will help us decide how best to prioritise our work and budgets over the next four years.**

**How important are the following illustrative actions and projects to you?**

	Very important	Important	Neither important nor not important	Of little importance	Not important
Partner with regional agencies to ensure economic recovery, quality employment, thriving businesses and vibrant communities, avoiding the blight of "dormitory towns"	<input type="checkbox"/>	<input type="checkbox"/>	<input type="checkbox"/>	<input type="checkbox"/>	<input type="checkbox"/>
Provide advice on access to grants, training and diversification programmes, helping local businesses to build agility and resilience	<input type="checkbox"/>	<input type="checkbox"/>	<input type="checkbox"/>	<input type="checkbox"/>	<input type="checkbox"/>
Plan for communities connected by walking & cycling networks, with sustainable, accessible and affordable public transport and reliable Broadband, learning the lessons from the Covid-19 experience and enabling more home-working	<input type="checkbox"/>	<input type="checkbox"/>	<input type="checkbox"/>	<input type="checkbox"/>	<input type="checkbox"/>
Launch a new community wellbeing strategy to encourage and support culture, leisure and the arts	<input type="checkbox"/>	<input type="checkbox"/>	<input type="checkbox"/>	<input type="checkbox"/>	<input type="checkbox"/>
Use our planning powers to preserve our valuable green spaces, particularly in urban areas	<input type="checkbox"/>	<input type="checkbox"/>	<input type="checkbox"/>	<input type="checkbox"/>	<input type="checkbox"/>
Work with our communities to maximise Community Infrastructure Levy funds and to allocate these to achieve best outcomes for residents in the District	<input type="checkbox"/>	<input type="checkbox"/>	<input type="checkbox"/>	<input type="checkbox"/>	<input type="checkbox"/>
Take enforcement action on fly-tipping, dog fouling and other anti-social blights on our society	<input type="checkbox"/>	<input type="checkbox"/>	<input type="checkbox"/>	<input type="checkbox"/>	<input type="checkbox"/>
Work with local partners to introduce civil parking enforcement as a district responsibility	<input type="checkbox"/>	<input type="checkbox"/>	<input type="checkbox"/>	<input type="checkbox"/>	<input type="checkbox"/>

**7. We would like to understand which of the words used to describe this theme particularly resonate with you (e.g. which words mean something to you). We also want to know which words are not clear or are confusing?**

These words  
resonate with me:

These words are not  
clear to me:

**8. Please use the space below to tell us if you have any comments on this theme and the actions proposed to deliver it? Is there anything missing from this theme or does it need to be expanded on?**

## Theme 3: Action on the Climate Emergency

### VIDEO

#### Why this theme?

The greatest challenge we face as a society is the Climate Emergency and our ability to adapt our lives and our behaviours to ensure a safe and resilient future. While statements and targets are welcome, the challenge for our district is to take action, transform our operations and inspire our residents and businesses to do the same. Aspects of our lives will need to change, but we have a duty to make this transition fair for all parts of society.

#### So we can...

...show leadership by developing and implementing a climate change programme to make the council net carbon neutral by 2025. We will help our communities to plan a fair transition to a future that will be defined by climate change.

#### How will we do this?

We have come up with some actions and projects that could help us achieve this theme.



**9. Your answers to this question will tell us which actions and projects identified to help achieve this theme are important to you. This will help us decide how best to prioritise our work and budgets over the next four years.**

**How important are the following illustrative actions and projects to you?**

	Very important	Important	Neither important nor not important	Of little importance	Not important
Achieve our own zero carbon target by 2025 and support others to achieve the district target of zero carbon by 2030	<input type="checkbox"/>	<input type="checkbox"/>	<input type="checkbox"/>	<input type="checkbox"/>	<input type="checkbox"/>
Develop an annually approved climate emergency programme and adequately finance it	<input type="checkbox"/>	<input type="checkbox"/>	<input type="checkbox"/>	<input type="checkbox"/>	<input type="checkbox"/>
Deliver Council-owned net-zero homes and use grants, planning policy and advocacy to ensure the same standards throughout the district	<input type="checkbox"/>	<input type="checkbox"/>	<input type="checkbox"/>	<input type="checkbox"/>	<input type="checkbox"/>
Promote and encourage behavioural change with informational campaigns and leading by example	<input type="checkbox"/>	<input type="checkbox"/>	<input type="checkbox"/>	<input type="checkbox"/>	<input type="checkbox"/>
Take positive action on single-use plastics, air quality improvement measures and sustainable transport	<input type="checkbox"/>	<input type="checkbox"/>	<input type="checkbox"/>	<input type="checkbox"/>	<input type="checkbox"/>
Mitigate climate change through planning and land use, enhancing biodiversity on our	<input type="checkbox"/>	<input type="checkbox"/>	<input type="checkbox"/>	<input type="checkbox"/>	<input type="checkbox"/>

	Very important	Important	Neither important nor not important	Of little importance	Not important
own land and strengthening the planning system to enforce environmental standards					
Promote the circular economy (reduce, re-use and recycle), including in our waste management contracts	<input type="checkbox"/>	<input type="checkbox"/>	<input type="checkbox"/>	<input type="checkbox"/>	<input type="checkbox"/>
Support and encourage local businesses to respond to climate change and nature recovery	<input type="checkbox"/>	<input type="checkbox"/>	<input type="checkbox"/>	<input type="checkbox"/>	<input type="checkbox"/>
Promote waste minimisation initiatives such as Repair Cafés	<input type="checkbox"/>	<input type="checkbox"/>	<input type="checkbox"/>	<input type="checkbox"/>	<input type="checkbox"/>
Work with Oxfordshire County Council to build on our commitment to active travel including walking, public transport and cycling infrastructure	<input type="checkbox"/>	<input type="checkbox"/>	<input type="checkbox"/>	<input type="checkbox"/>	<input type="checkbox"/>

**10. We would like to understand which of the words used to describe this theme particularly resonate with you (e.g. which words mean something to you). We also want to know which words are not clear or are confusing?**

These words  
resonate with me:

These words are not clear to me:

**11. Please use the space below to tell us if you have any comments on this theme and the actions proposed to deliver it? Is there anything missing in this theme or does it need to be expanded on?**

## Theme 4: Protect and restore our natural world

### VIDEO

#### Why this theme?

South Oxfordshire is a largely rural district, including parts of two Areas of Outstanding Natural Beauty and the Oxford green belt, as well as a long stretch of the River Thames. The natural world is proven to provide benefits to both mental and physical health, as well as having its own intrinsic value, and it needs our protection.

#### So we can...

...respect and protect our natural environment, especially our Areas of Outstanding Natural Beauty and other nature-rich areas. We will champion the opportunity to restore our natural world in both biodiverse and bio-depleted areas through nature recovery networks and other means. We will connect urban communities to their local green spaces and restore nature to urban environments.

#### How will we do this?

We have come up with some actions and projects that could help us achieve this theme.

**12. Your answers to this question will tell us which actions and projects identified to help achieve this theme are important to you. This will help us decide how best to prioritise our work and budgets over the next four years.**

**How important are the following illustrative actions and projects to you?**

	Very important	Important	Neither important nor not important	Of little importance	Not important
With partners, promote in-depth mapping and surveying of ecosystems across the district, planning for restoration of the natural world and working closely with land-owners and specialist agencies	<input type="checkbox"/>	<input type="checkbox"/>	<input type="checkbox"/>	<input type="checkbox"/>	<input type="checkbox"/>
Celebrate, protect and enhance our natural assets, including the River Thames and the AONBs and their setting, promoting our rural district for tourism, leisure and wellbeing	<input type="checkbox"/>	<input type="checkbox"/>	<input type="checkbox"/>	<input type="checkbox"/>	<input type="checkbox"/>
Encourage the use of natural processes to combat risks arising from climate change, such as meadows and trees to reduce flooding	<input type="checkbox"/>	<input type="checkbox"/>	<input type="checkbox"/>	<input type="checkbox"/>	<input type="checkbox"/>
Recognise and support the vital role of farming in economic and ecosystem resilience, local food provision and the recovery of soils and natural processes	<input type="checkbox"/>	<input type="checkbox"/>	<input type="checkbox"/>	<input type="checkbox"/>	<input type="checkbox"/>
Call for the establishment of a Local Nature Partnership for Oxfordshire to promote an ambitious	<input type="checkbox"/>	<input type="checkbox"/>	<input type="checkbox"/>	<input type="checkbox"/>	<input type="checkbox"/>

	Very important	Important	Neither important nor not important	Of little importance	Not important
nature recovery programme, including tree and meadow planting, rewilding and providing habitats for wildlife including wildlife corridors					
Work in partnership with the Earth Trust, Chilterns Conservation Board, North Wessex Downs AONB, the Environment Agency and others to improve access to green spaces in and around our towns, reinforcing access to nature as a priority for community wellbeing	<input type="checkbox"/>	<input type="checkbox"/>	<input type="checkbox"/>	<input type="checkbox"/>	<input type="checkbox"/>

**13. We would like to understand which of the words used to describe this theme particularly resonate with you (e.g. which words mean something to you). We also want to know which words are not clear or are confusing?**

These words resonate with me:

These words are not clear to me:

**14. Please use the space below to tell us if you have any comments on this theme and the actions proposed to deliver it? Is there anything missing from this theme or does it need to be expanded on?**

## Theme 5: Investment and innovation that rebuilds our financial viability

### VIDEO

#### Why this theme?

Coronavirus has cost, and lost, the council money. Many years of austerity before that, as well as a failure to increase council tax in line with growing costs, makes it hard to balance the books. The future funding picture for councils from Government remains unclear. In order to deliver a progressive and ambitious agenda, we need to reduce the gap between income and expenditure in our Medium Term Financial Plan.

#### So we can...

...invest to save and act responsibly and ethically with our financial resources. We will work with other councils for fair funding and will investigate new viable sources of revenue in order to maintain and improve vital services. We will ensure all financial operations and reporting support effective decision-making and strong, ethical governance.

#### How will we do this?

We have come up with some actions and projects that could help us achieve this theme.

**15. Your answers to this question will tell us which actions and projects identified to help achieve this theme are important to you. This will help us decide how best to prioritise our work and budgets over the next four years.**

**How important are the following illustrative actions and projects to you?**

	Very important	Important	Neither important nor not important	Of little importance	Not important
Develop and implement an innovative Transformation Strategy to diversify our revenue streams, improve our effectiveness and secure our on-going viability	<input type="checkbox"/>	<input type="checkbox"/>	<input type="checkbox"/>	<input type="checkbox"/>	<input type="checkbox"/>

	Very important	Important	Neither important nor not important	Of little importance	Not important
"Invest to save" for the District, including the delivery of sustainable new Council offices – on time and within budget – to realise future operational efficiencies	<input type="checkbox"/>	<input type="checkbox"/>	<input type="checkbox"/>	<input type="checkbox"/>	<input type="checkbox"/>
Exercise strong Stewardship of all Council assets including property and financial investments, optimising their performance for the benefit of our residents	<input type="checkbox"/>	<input type="checkbox"/>	<input type="checkbox"/>	<input type="checkbox"/>	<input type="checkbox"/>
Maximise external funding opportunities to support our services and to enrich our leisure, sporting and community activities	<input type="checkbox"/>	<input type="checkbox"/>	<input type="checkbox"/>	<input type="checkbox"/>	<input type="checkbox"/>
Invest responsibly and ethically with the Climate Emergency at the heart of what we do	<input type="checkbox"/>	<input type="checkbox"/>	<input type="checkbox"/>	<input type="checkbox"/>	<input type="checkbox"/>

**16. We would like to understand which of the words used to describe this theme particularly resonate with you (e.g. which words mean something to you). We also want to know which words are not clear or are confusing?**

These words resonate with me:

These words are not clear to me:



**17. Please use the space below to tell us if you have any comments on this theme and the actions proposed to deliver it? Is there anything missing from this theme or does it need to be expanded on?**

## Theme 6: Openness and accountability

### VIDEO

#### Why this theme?

The complexity of modern society and local government structures can be hard to navigate. Many services are delivered as part of external partnerships, so it can be hard for residents to see what we do and how we do it. There are some groups within our district with whom we have little engagement or interaction, so the diversity of our district is not always recognised and supported.

#### So we can...

...maintain and improve high levels of satisfaction with the services we provide and will reach out to all sectors and age-groups to foster a culture of openness, participation and representation. We will use our influence to champion inclusion, diversity and transparency across all elected and unelected bodies in our region. We will empower and invest in our staff and conduct our operations with the highest level of integrity and accountability.

#### How will we do this?

We have come up with some actions and projects that could help us achieve this theme.

**18. Your answers to this question will tell us which actions and projects identified to help achieve this theme are important to you. This will help us decide how best to prioritise our work and budgets over the next four years.**

**How important are the following illustrative actions and projects to you?**

	Very important	Important	Neither important nor not important	Of little importance	Not important
Enhance trust and accountability in	<input type="checkbox"/>	<input type="checkbox"/>	<input type="checkbox"/>	<input type="checkbox"/>	<input type="checkbox"/>

	Very important	Important	Neither important nor not important	Of little importance	Not important
democratic decision-making, including live-streaming and recording of meetings, ensuring full accessibility of facilities and monitoring progress in an open and transparent way					
Ensure that council departments work collaboratively to deliver best outcomes for residents	<input type="checkbox"/>	<input type="checkbox"/>	<input type="checkbox"/>	<input type="checkbox"/>	<input type="checkbox"/>
Embed an organisational culture that celebrates diversity, inclusion and respect	<input type="checkbox"/>	<input type="checkbox"/>	<input type="checkbox"/>	<input type="checkbox"/>	<input type="checkbox"/>
Apply good governance and transparency in all our working and decision-making, exploring optimal structures and mechanisms for best practice in local government	<input type="checkbox"/>	<input type="checkbox"/>	<input type="checkbox"/>	<input type="checkbox"/>	<input type="checkbox"/>
Engage effectively with residents, Parish and Town Councils and other community organisations, using plain English in our communications and using appropriate methods and technologies to ensure equal and fair access for all	<input type="checkbox"/>	<input type="checkbox"/>	<input type="checkbox"/>	<input type="checkbox"/>	<input type="checkbox"/>

**19. We would like to understand which of the words used to describe this theme particularly resonate with you (e.g. which words mean something to you). We also want to know which words are not clear or are confusing?**

These words  
resonate with me:

These words are not  
clear to me:

**20. Please use the space below to tell us if you have any comments on this theme and the actions proposed to deliver it? Is there anything missing from this theme or does it need to be expanded on?**

## Anything else?

**21. If you think any themes or priorities are missing in the South Oxfordshire Corporate Plan please use the space below to tell us.**

**22. Are there any other comments you wish to make about the proposed themes for the South Oxfordshire Corporate Plan or to help us decide future priorities?**

## A little bit about you...

To help us to better understand responses to this survey, and see if we are reaching a wide variety of people, please can you tell us about yourself.

### 23. What is your connection to South Oxfordshire? Tick all that apply.

- ☐ I live in South Oxfordshire
- ☐ I work in South Oxfordshire
- ☐ I visit South Oxfordshire (e.g. to shop or see family/friends)
- ☐ I prefer not to say
- ☐ Other (please specify):

### 24. Are you responding as:

- ☐ An individual/member of the public
- ☐ A business/organisation
- ☐ A community group
- ☐ A South district councillor
- ☐ A South and Vale council officer (e.g. staff)
- ☐ A county or town/parish councillor or officer
- ☐ Other (please specify):

### 25. What is the name of your business/organisation, community group or what council are you representing?

## Equalities

We are committed to making sure that everyone has equal access to our services. Please help us keep track of how successfully we are achieving this by ticking the appropriate boxes below. All information is confidential and will only be used to help us monitor whether views differ across the community.

We are especially interested in knowing whether we are hearing from younger people and other groups that don't often engage with us.

### 26. Which of the following describes how you think of yourself?

- ☐ Male
- ☐ Female
- ☐ In another way
- ☐ Prefer not to say

### 27. How old are you?

- ☐ Child (12 and under)
- ☐ Teenager
- ☐ 20-34
- ☐ 35-44
- ☐ 45-54
- ☐ 55-64
- ☐ 65-74
- ☐ 75+
- ☐ Prefer not to say

### 28. What is your ethnic group? Please tick one box only.

#### • White

- ☐ English, Welsh, Scottish, Northern Irish, British
- ☐ Irish
- ☐ Gypsy or Irish Traveller

☐ Any other white background

• **Asian or Asian British**

☐ Indian

☐ Pakistani

☐ Bangladeshi

☐ Any other Asian background

• **Black or Black British**

☐ Black British

☐ Caribbean

☐ African

☐ Any other black background

• **Mixed**

☐ White and Black Caribbean

☐ White and Black African

☐ White and Asian

☐ Any other mixed background

• **Other Ethnic Group**

☐ Chinese

☐ Any other Ethnic Group

☐ • **Prefer not to say**

**29. Are your day to day activities limited because of a health problem or disability which has lasted or is expected to last 12 months or more?**

☐ Yes

☐ No

☐ Prefer not to say

If yes, please specify:

**Thank you for your comments.**

## EASY READ SURVEY VERSION

The layout for the Easy Read form below differs slightly from the original version.

# Our plans for 2020 to 2024

## What do you think?





# Introduction



This comes from South Oxfordshire District Council.



We are writing a plan for 2020 to 2024.

This document explains our ideas for the plan.



We call these ideas 'themes'. They are the main things we want to achieve.

Before we write the final plan, we want to know what you think about our themes.

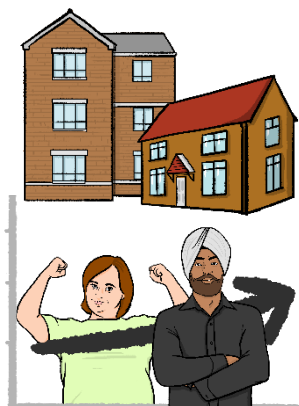


Please read this document and tell us what you think by answering the questions.



We need your answers by midnight on Thursday, 13 August 2020.

# Our themes



We have 6 themes:

**Theme 1:** Providing the homes people need.

**Theme 2:** Improving health and jobs.



**Theme 3:** Dealing with the **climate emergency**.

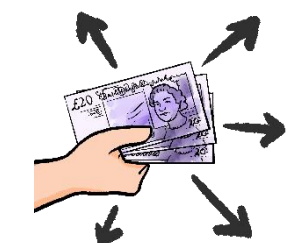
The **climate emergency** is the whole world getting warmer because of pollution.



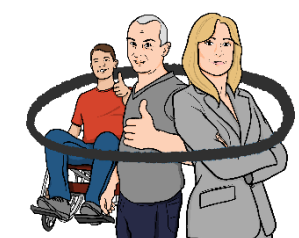
**Pollution** is dirty chemicals in the air from things like cars and heating buildings.



**Theme 4:** Looking after wildlife and the countryside.



**Theme 5:** Looking after our money properly.



**Theme 6:** Involving everyone.

# What do you think?



**Question 1.** Please tell us how important these themes are to you. Write '1' by the theme that is most important to you, '2' by the next most important and so on.



☐ **Theme 1:** Providing the homes people need.



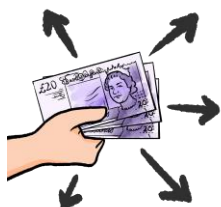
☐ **Theme 2:** Improving health and jobs.



☐ **Theme 3:** Dealing with the climate emergency.



☐ **Theme 4:** Looking after wildlife and the countryside.



☐ **Theme 5:** Looking after our money properly.

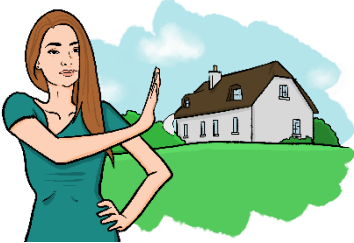


☐ **Theme 6:** Involving everyone.



**Question 2.** In your own words, please tell us what makes a happy and successful community?

# Theme 1: Providing the homes people need



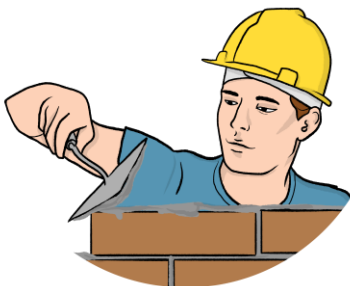
Many homes are too expensive for local people to buy.



New homes are being built, but sometimes there aren't enough **facilities**.



**Facilities** are things like shops, schools, roads or doctor's surgeries.



Many new homes are not built to be good for a long time.

We will provide more homes that:



- more local people can afford
- will be warm and good for a long time



We will make it easy for people to walk, cycle or get the bus from their new home



**Question 3.** Please tell us how important these are to you:

a) Creating new public transport, cycling, walking and green spaces in Didcot?



Very  
Important

☐


Important

☐


Neither

☐


Not very  
important

☐


Not  
important

☐

## b) Changes to Berinsfield so it becomes a Garden Village?



Very  
Important



Important



Neither



Not very  
important



Not  
important



## c) Building new council houses?



Very  
Important



Important



Neither



Not very  
important



Not  
important



Making existing houses warmer and cheaper to keep warm?





Very  
Important

☐


Important

☐


Neither

☐


Not very  
important

☐


Not  
important

☐

d) Making sure there are enough homes so that no-one needs to be homeless.

This includes making empty homes ready for people to live in?



Very  
Important

☐


Important

☐


Neither

☐


Not very  
important

☐


Not  
important

☐

e) Making sure council staff can help people get Government money for new housing projects?



Very Important

☐


Important

☐


Neither

☐


Not very important

☐


Not important

☐

f) Making sure new homes are built so they will be good for the environment for a long time?



Very Important

☐


Important

☐


Neither

☐


Not very important

☐


Not important

☐

g) Making sure that new housing schemes are designed to be good for people's health?



Very  
Important



Important



Neither



Not very  
important



Not important



h) Improving people's houses so they are warmer and keep up with what people want?



Very  
Important



Important



Neither



Not very  
important



Not  
important

Better buses and trains. Safer ways to cycle and walk so that people don't have to use cars so much?



Very  
Important

☐


Important

☐


Neither

☐


Not very  
important

☐


Not important

☐

**Question 4:** Which words in Theme 1 do you think are the most important?




Which words in Theme 1 are difficult to understand?



**Question 5:** Do you have any comments about this theme?



# Theme 2: Improving health and jobs

We want to help:



- small businesses to do well
- everyone to be part of our local communities.



We want to encourage new businesses to find new ways to make things.

We want to encourage community groups to:



- help everyone get involved
- support the areas where people have less money.



**Question 6.** Please tell us how important these are to you:



a) Working with the Government to help local businesses?



Very  
Important

Important

Neither

Not very  
important

Not important

☐
☐
☐
☐
☐

b) Helping local businesses to get money to grow



Very  
Important

Important

Neither

Not very  
important

Not important

☐
☐
☐
☐
☐



c) Linking communities together more with better public transport, cycling, walking and broadband?



Very Important



Important



Neither



Not very important



Not important



d) Helping people feel good with more arts, music, theatre events and more sports?



Very Important



Important



Neither



Not very important



Not important



e) Making sure companies who build houses pay towards better community facilities?



Very Important



Important



Neither



Not very important



Not important

☐
☐
☐
☐
☐

f) Do more to stop people dumping rubbish and letting their dogs leave mess around the place?



Very  
Important

Important

Neither

Not very  
important

Not  
important

☐
☐
☐
☐
☐

g) Do more to stop people parking in the wrong place?



Very  
Important

Important

Neither

Not very  
important

Not important

☐
☐
☐
☐
☐

**Question 7:** Which words in Theme 2 do you think are the most important?



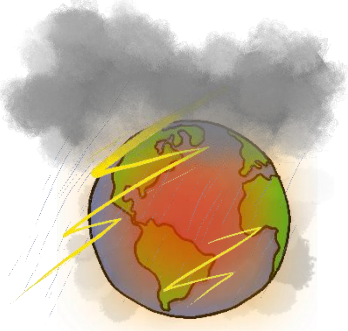
Which words in this Theme 2 are difficult to understand?



**Question 8:** Do you have any comments about this theme?

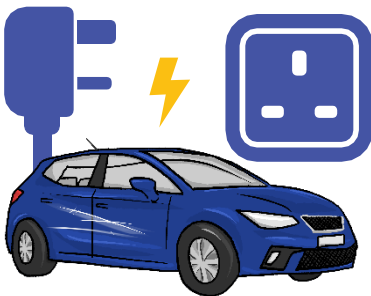


# Theme 3: Dealing with the climate emergency

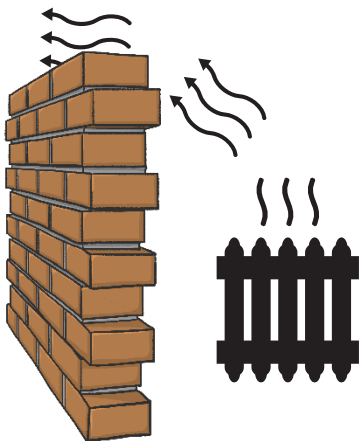


The world is getting warmer and this is leading to worse storms and floods.

We can reduce the amount of pollution in South Oxfordshire by:



- moving to electric cars



- stopping homes and buildings from wasting so much heat.



We want to make the changes by 2025.



**Question 9.** Please tell us how important these are to you:

a) Stopping the pollution from the council by 2025. Help other organisations stop by 2030?



Very  
Important

☐


Important

☐


Neither

☐


Not very  
important

☐


Not  
important

☐

b) Planning the things we need to do to stop the climate from getting much worse?



Very Important

☐


Important

☐


Neither

☐


Not very important

☐


Not important

☐

c) Building council houses that don't cause any pollution?



Very Important

☐


Important

☐


Neither

☐


Not very important

☐


Not important

☐

d) Helping local people and organisations to stop causing so much pollution?



Very Important

☐


Important

☐


Neither

☐


Not very important

☐


Not important

☐

e) Stopping shops from using so much plastic packaging which has to be thrown away?



Very  
Important

☐


Important

☐


Neither

☐


Not very  
important

☐


Not  
important

☐

f) Using land in a better way to stop the climate getting worse?



Very  
Important

☐


Important

☐


Neither

☐


Not very  
important

☐


Not  
important

☐



g) Encouraging everyone to reuse and recycle more,  
instead of throwing things away



Very  
Important

Important

Neither

Not very  
important

Not  
important

☐
☐
☐
☐
☐

h) Helping local businesses work to stop the climate  
getting worse?



Very  
Important

Important

Neither

Not very  
important

Not  
important

☐
☐
☐
☐
☐

i) Working with Oxfordshire County Council to encourage more people to walk, cycle or use public transport?



Very  
Important

☐


Important

☐


Neither

☐


Not very  
important

☐


Not important

☐

**Question 10:** Which words in Theme 3 do you think are the most important?




Which words in Theme 3 are difficult to understand?



**Question 11:** Do you have any comments about this theme?



# Theme 4: Looking after wildlife and the countryside



Nature, wildlife and the countryside is important for people's health.

We have some important areas of countryside. We need to keep them safe.



**Question 12.** Please tell us how important these are to you:

a) Working with others to check on our nature areas and countryside?



Very  
Important

☐


Important

☐


Neither

☐


Not very  
important

☐


Not important

☐

b) Helping people to realise how important our nature areas and countryside are?



Very  
Important

☐


Important

☐


Neither

☐


Not very  
important

☐


Not  
important

☐

c) Using trees and meadows to help stop flooding?



Very  
Important

☐


Important

☐


Neither

☐


Not very  
important

☐


Not  
important

☐

d) Supporting farmers to look after the countryside and grow food locally?



Very  
Important

☐


Important

☐


Neither

☐


Not very  
important

☐


Not  
important

☐

e) Working with others to let some areas be wild and plant more trees? This is good for wildlife.



Very  
Important

☐

Important

☐

Neither

☐

Not very  
important

☐

Not important

☐

f) Working with others to make it easier for people to enjoy the countryside and areas for wildlife?



Very  
Important

☐

Important

☐

Neither

☐

Not very  
important

☐

Not important

☐

**Question 13:** Which words in Theme 4 do you think are the most important?



Which words in this Theme 4 are difficult to understand?

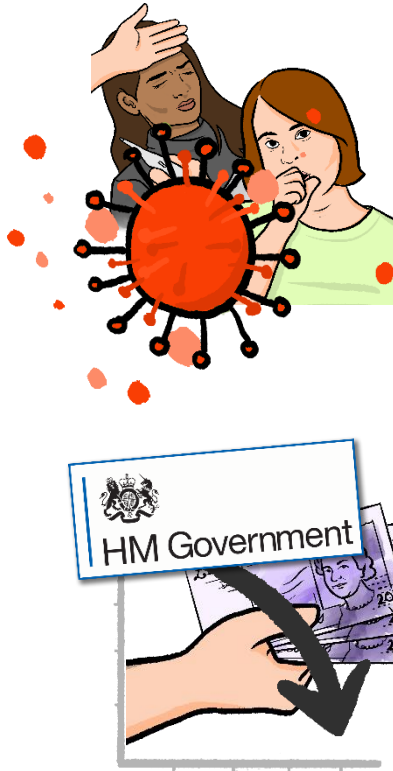




**Question 14:** Do you have any comments about this theme?

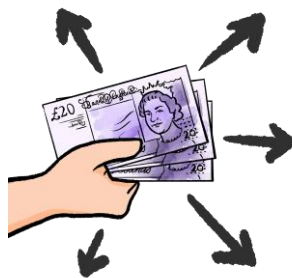


# Theme 5: Looking after our money properly



The council has lost a lot of money because of Coronavirus.

The council now gets a lot less money from the Government than it used to.



We need to plan to use our money in the best way to keep our services going.



We also need to think about new ways to earn money.



**Question 15.** Please tell us how important these are to you:

a) Planning new ways for the council to earn money?



Very  
Important

☐


Important

☐


Neither

☐


Not very  
important

☐


Not important

☐

b) Spending money now on things that will save us money in the future?



Very  
Important

☐


Important

☐


Neither

☐


Not very  
important

☐


Not important

☐

c) Making better use of our buildings?



Very  
Important

☐


Important

☐


Neither

☐


Not very  
important

☐


Not  
important

☐

d) Looking for ways to get more money to our sports and community activities?



Very  
Important

☐


Important

☐


Neither

☐


Not very  
important

☐


Not  
important

☐

e) Spending money in ways that is good for the planet?



Very  
Important

☐


Important

☐


Neither

☐


Not very  
important

☐


Not important

☐

**Question 16:** Which words in Theme 5 do you think are the most important?




Which words in Theme 5 do you think are difficult to understand?



**Question 17:** Do you have any comments about this theme?



# Theme 6: Involving everyone



The council is for all the people in our district.

We want to make sure we are being fair to everyone in South Oxfordshire.



want to:

- help people understand why we do things
- help people to join in local communities
- involve people from all different communities and backgrounds.







We want our staff to come from all different communities and backgrounds.

**Question 18.** Please tell us how important these are to you:



a) Finding new ways to let people see how the council and its committees make decisions?



Very  
Important

☐


Important

☐


Neither

☐


Not very  
important

☐


Not important

☐

b) Making sure the different parts of the council work together properly?



Very  
Important

☐

Important

☐

Neither

☐

Not very  
important

☐

Not important

☐

c) Making sure all parts of the council involve people from all different communities and backgrounds?



Very  
Important

Important

Neither

Not very  
important

Not important

☐
☐
☐
☐
☐

d) Looking for new and better ways to make decisions?



Very  
Important

Important

Neither

Not very  
important

Not important

☐
☐
☐
☐
☐

e) Getting better at asking local people and communities what they think?



Very  
Important

☐


Important

☐


Neither

☐


Not very  
important

☐


Not important

☐

**Question 19:** Which words in Theme 6 do you think are the most important?




Which words in Theme 6 are difficult to understand?



**Question 20:** Do you have any comments about this theme?



# Anything else?



**Question 21:** Is there anything missing from these themes?

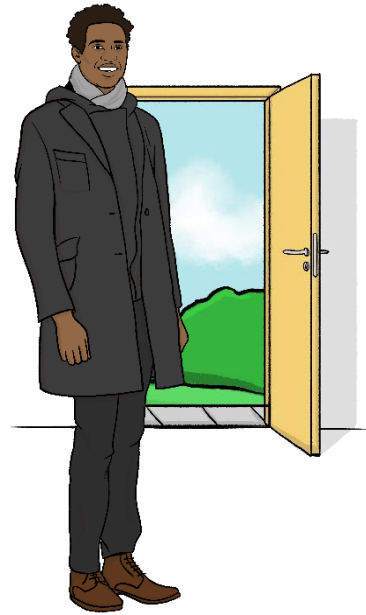


**Question 22:** Do you have any other comments?

# About you

**Question 23.** Do you...

- ☐ Live in South Oxfordshire
- ☐ Work in South Oxfordshire
- ☐ Visit South Oxfordshire often
- ☐ I prefer not to say
- ☐ Other - please say





**Question 24.** Are you a...

- ☐ Member of the public
- ☐ Business or an organisation
- ☐ Community group
- ☐ Councillor
- ☐ Council worker
- ☐ Other - please say



**Question 25.** What is the name of your business, organisation or community group?



# More about you



Please answer these questions about yourself.

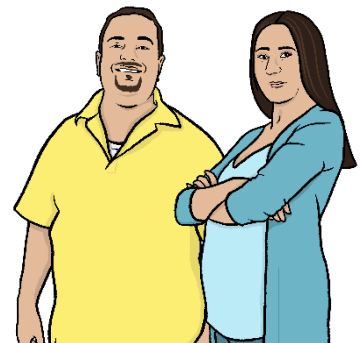
Your answers will help us to make sure we are hearing from all different people in South Oxfordshire.

## Question 26.

Are you...

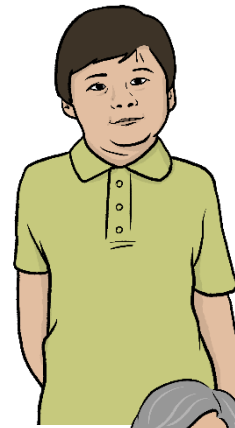
- ☐ Male
- ☐ Female
- ☐ Other - please say

- ☐ Prefer not to say



**Question 27.** How old are you?

- ☐ 12 and under
- ☐ 13 - 19
- ☐ 20 - 34
- ☐ 35 - 44
- ☐ 45 - 54
- ☐ 55 - 64
- ☐ 65 - 74
- ☐ 75 and over
- ☐ Prefer not to say



**Question 28.** Are you...

**White**

- ☐ English, Welsh, Scottish, Northern Irish, British
- ☐ Irish
- ☐ Gypsy or Irish Traveller
- ☐ Any other white background



**Asian**

- ☐ Indian
- ☐ Pakistani
- ☐ Bangladeshi
- ☐ Any other Asian background



**Black**

- ☐ Black British
- ☐ Caribbean
- ☐ African



☐ Any other black background

### Mixed

☐ White and Black Caribbean

☐ White and Black African

☐ White and Asian

☐ Any other mixed background



### Other ethnic group

☐ Chinese

☐ Any other ethnic group

☐ Prefer not to say



**Question 29.** Do you have a long term health problem or disability?

☐ Yes ☐ No

☐ Prefer not to say

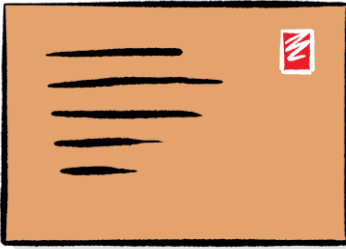
If 'Yes' please say what



# Thank you



Thank you for your answers.  
Please now post your answers back to us at:



**South Oxfordshire District Council 135 Eastern Avenue  
Milton Park Milton OX144SB**



## **Formoreinformation**

If you need more information please contact us by:

Email:

**haveyoursay@southandval**

**e.gov.uk**

Phone: **07917 088341**



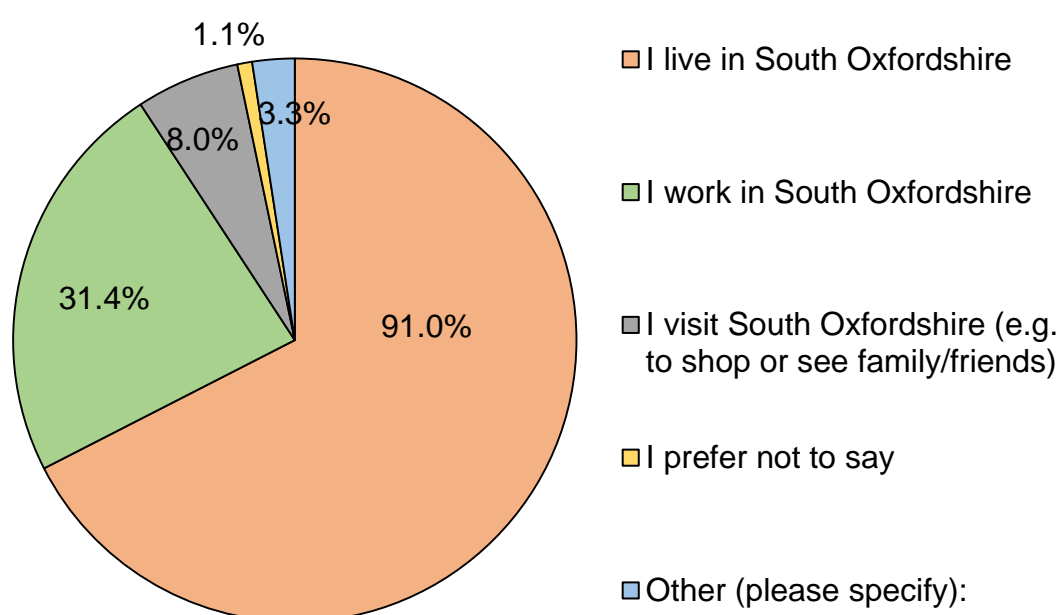
Easy Read by **easy-read-online.co.uk**

## APPENDIX E – DEMOGRAPHIC DATA

Below is the demographic data collected in the engagement. Not all respondents answered so percentages given represent responses to each question.

Comments in italics in brackets are provided for clarification.

### Q21. What is your connection to South Oxfordshire? Tick all that apply.



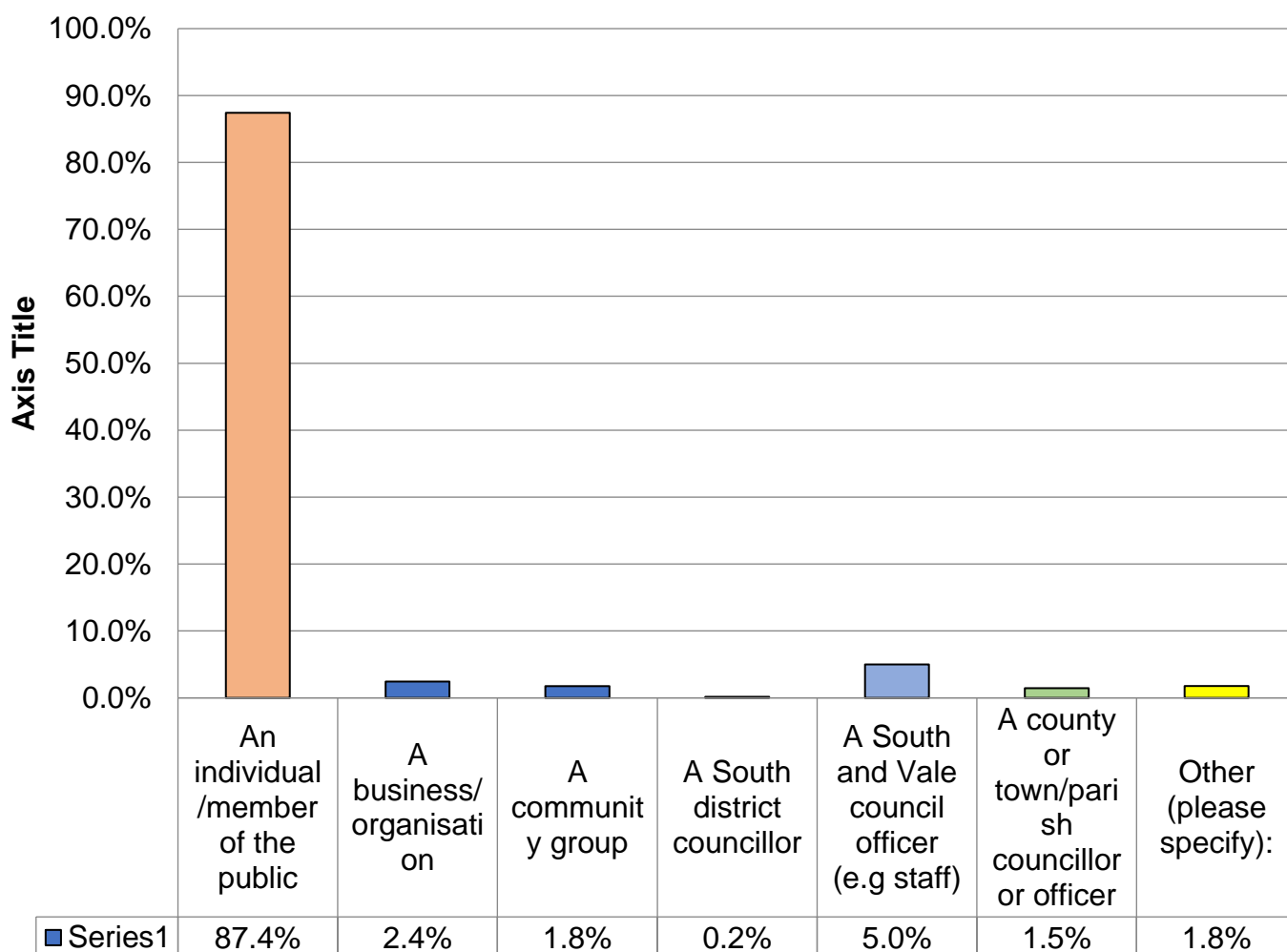
#### Other, please specify:

- I am retired but used to work in S Oxon (*South Oxfordshire*)
- Worked and live in South Oxfordshire
- I live just over the border in CDC but am affected by the SODC (*South Oxfordshire District Council*) Local Plan
- Very close to the border
- I am retired but I did work in South Oxfordshire
- I am retired now
- Daughter of resident
- I live on the SODC (*South Oxfordshire District Council*)/Reading border emmer green



- I have been retired for some years now, but greatly appreciate the neighbourhood in which I live, and the way in which it has been governed during my time here
- I used to work in Didcot, now retired
- Retired
- I have experience as a Parish Clerk also as a Parish Councillor and I've been active in local politics. I'm concerned about ruination of the Green Belt and development wrongly targeted there instead of redeveloping outmoded housing in the Cities and towns
- It's home! and a great area to be if not spoilt by over development
- Statutory consultee
- I live in Oxford
- Recently lived there
- Cherwell! but we have the same issues
- I enjoy the South Oxfordshire environment for walking and cycling
- Work for a national NGO (*Non-governmental Organisation*)

### Q22. Are you responding as:



**Other, please specify:**

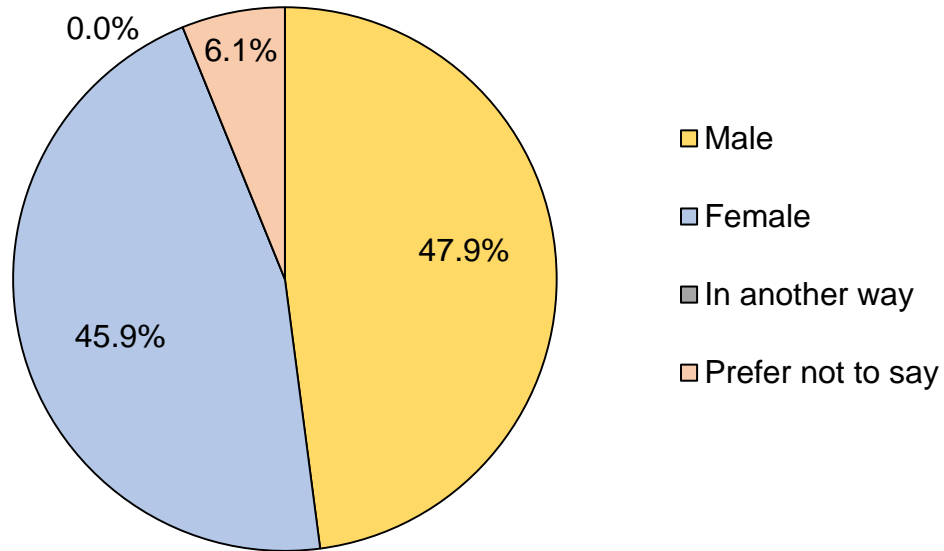
- SODC email (*South Oxfordshire District Council*)
- Member of the public and business owner
- An individual and a Parish Councillor
- Former Chair of a volunteer-run sports club for 10 years
- I am a member of the public, a businesswoman and highly involved in several Community groups but I'm not officially responding on behalf of them
- Former Parish Chairman
- Previous parish councillor
- Member of public, business owner and community group member
- N/A (*Not applicable*)
- An involved citizen well aware of changes needed in policies
- A resident

**Q23. What is the name of your business/organisation, community group or what council are you representing?**

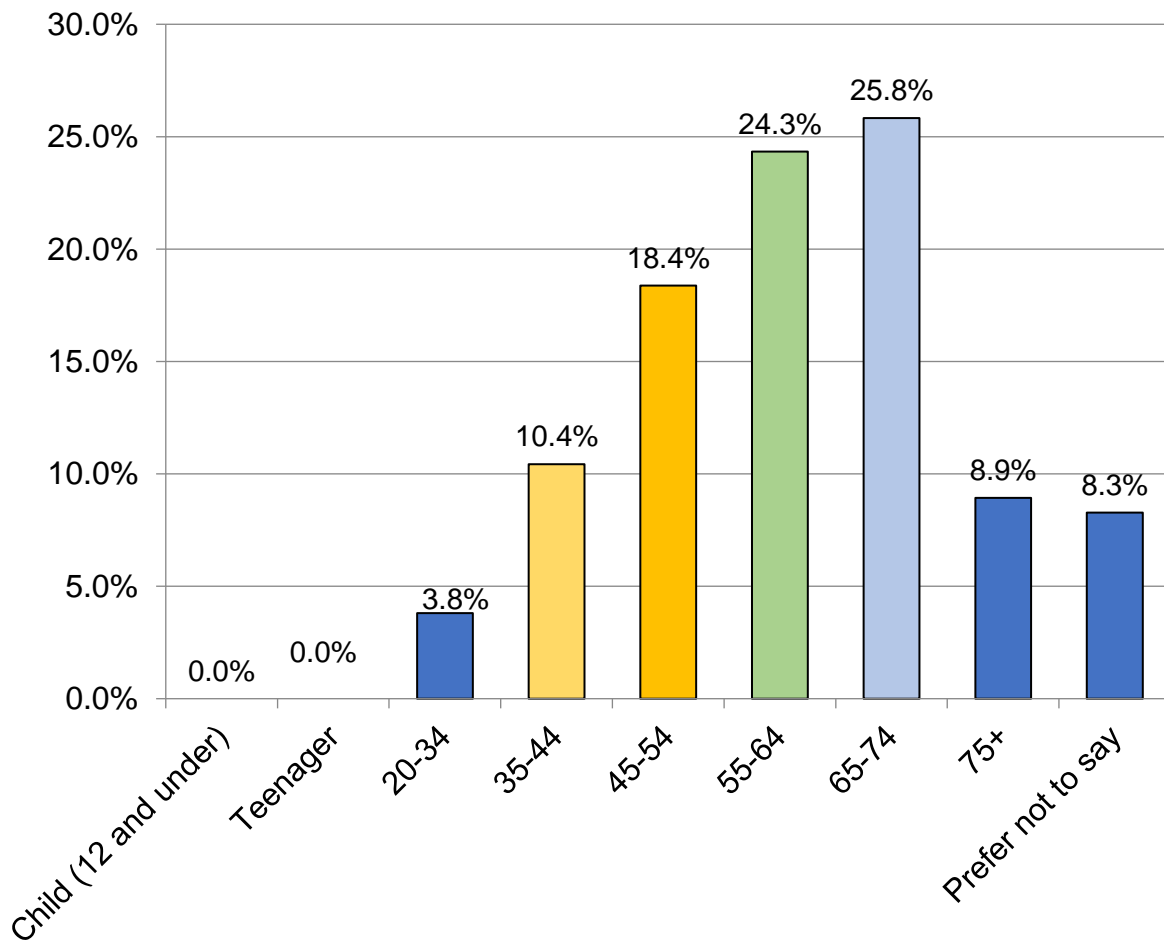
- N/A (*Not applicable*) **x 9 responses**
- South Oxfordshire District Council **x 7 responses**
- South and Vale District Councils **x 3 responses**
- None **x 3 responses**
- Chinnor Parish **x 3 responses**
- Didcot First, Pryors Cars, Didcot Cricket Club
- Elsfield Parish Meeting
- Private individual
- Horspath coronavirus volunteer group
- Delta Motor Sport
- Oxford Farmhouse CIC (*Community Interest Company*)
- Consultancy practice
- Woodcote Parish Council
- Didcot Good Neighbour Scheme
- Huntercombe Residents Association
- Repair Cafés
- Private
- Henley RFC (*Rugby Football Club*)
- SOFEA
- Not relevant
- The Boys Brigade and Girls Association
- Kite Creative
- Swyncombe Parish Council
- Oxford Preservation Trust
- Sonning Eye Action Group

- Jennings
- Chalgrove (*Parish Council*)
- Wheatley community
- Oxfordshire Sexual abuse and Rape Crisis Centre
- Bed and breakfast
- Karthik G
- Stadhampton Parish Council
- Mapleduram Parish Council
- Cholsey Wildlife
- Berrick Salome (*Parish Council*)
- Stanton St John and surrounding rural areas
- Kings copse
- Tiddington (*with Albury Parish Council*)
- Wheatley Parish Council
- The Wallingford Window Co.
- Sport England
- Sonning Eye Action Group
- Highways England
- Wheatley Parish Council
- Garsington Society
- Thame (*Town Council*)
- Red Pesto Ltd
- Kidmore End Parish Council
- The Wheatley Society (civic society)
- Didcot Volunteer Drivers
- Ipsden Parish Council
- The Woodland Trust
- Thame Green Living
- My Life My Choice - Didcot Self Advocacy Group

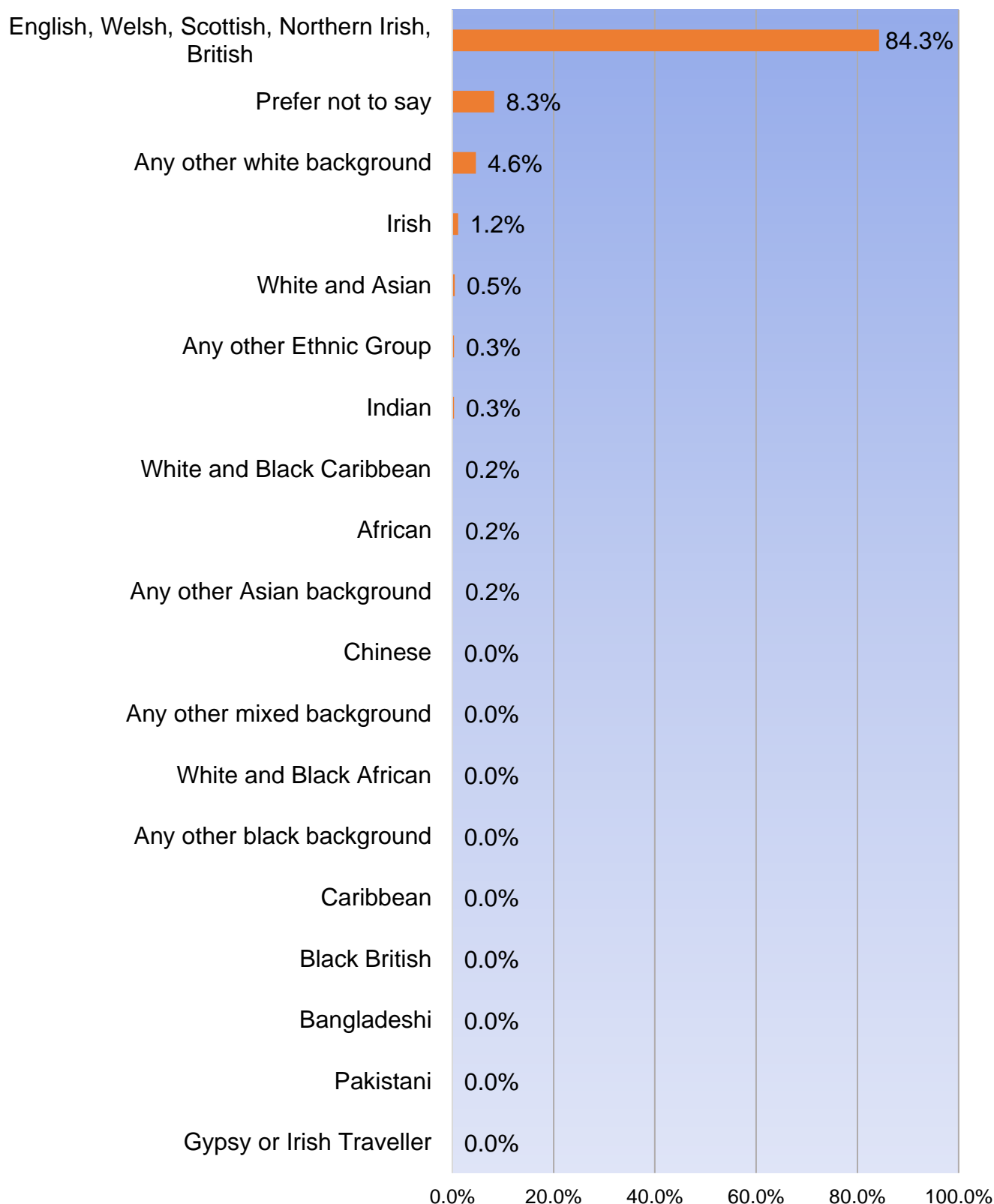
**Q24. Which of the following describes how you think of yourself?**



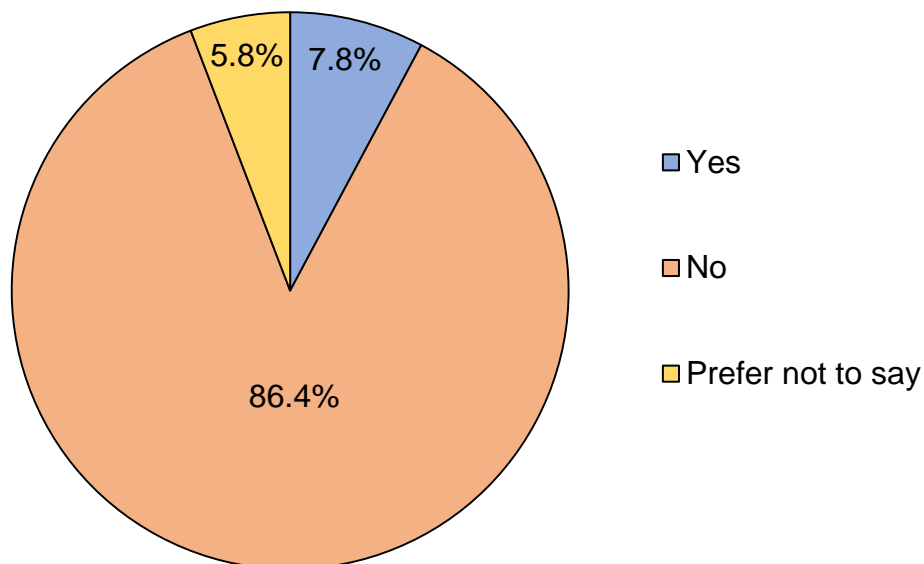
**Q25. How old are you?**



**Q26. What is your ethnic group? Please tick one box only.**



**Q27. Are your day to day activities limited because of a health problem or disability which has lasted or is expected to last 12 months or more?**



**If yes, please specify:**

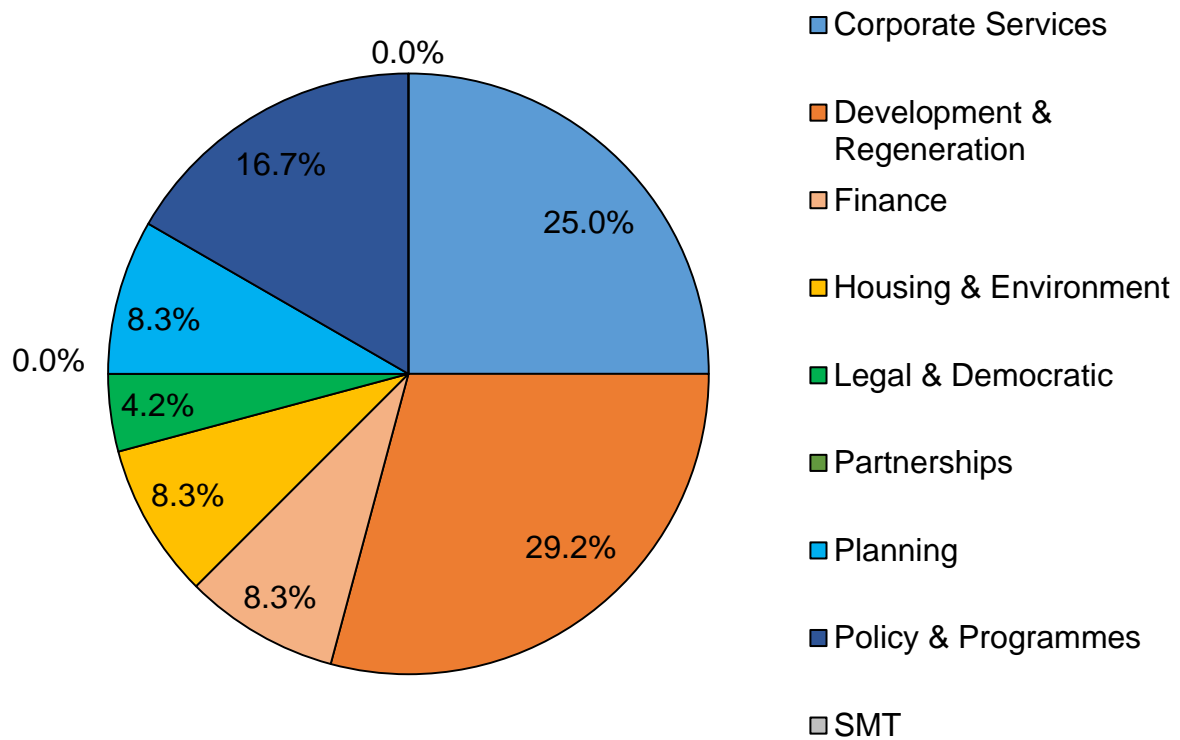
- I have very limited mobility and use a wheelchair on a regular basis
- Old age
- My ability to earn money has been hit by Covid and will be hit very hard at the end of the year by Brexit. You need to slash Council Tax amounts, not keep demanding more & more each year. People simply can't afford them
- Limited walking through fibromyalgia, bursitis & a prolapsed disc
- Disabled, and having moved to the area recently I am appalled at the lack of provision in comparison to other UK areas
- Leukaemia and Arthritis
- Currently due to CV19 advice have ended whole range of person to person contacts otherwise would have said No
- I would normally answer no to this question, but in practice I am a very long-term type 1 diabetic with other conditions, who will be shielding for the foreseeable future due to husband's health, not mine
- I am waiting for a hip replacement
- Age 92
- I have M.E and also osteoarthritis due to too many sports injuries and not enough physio
- Eye-sight limitations
- I have exercise induced Asthma which I got while serving in the RAF. I have a severe cough for over ten years which the NHS cannot find a cure for. It takes

my energy away and can tire me out. Recently, I have been informed that my Adrenal Glands have stopped working so I have to take tablets every day for the rest of life. Without the tablets I would have blood pressure problems both up and down and the possibility of getting seriously ill with things like Covid 19

- Waiting for a hip replacement, last played golf 04/08/2019
- Cannot walk very far so have to use the car
- Respiratory and cardiac disease
- My mother is 92 and has live in care post stroke 4 years ago. Currently there is not even her weekly shopping bus lifeline in operation
- Asthma
- Deaf, diabetic, poor balance
- Osteo arthritis in knees
- Only covid 19!
- Arthritis and fibromyalgia
- Varicosity that has become long delayed to repair and has brought mobility problems due to lack of NHS services
- Arthritis, Heart Condition
- Old age
- I'm old nuff said
- I have MS which makes walking difficult
- Multiple Sclerosis
- No, unless you include the outbreak
- The need to avoid the virus
- Old age
- Multiple sclerosis
- Leg disability plus severe hearing loss
- Bad knees & Back

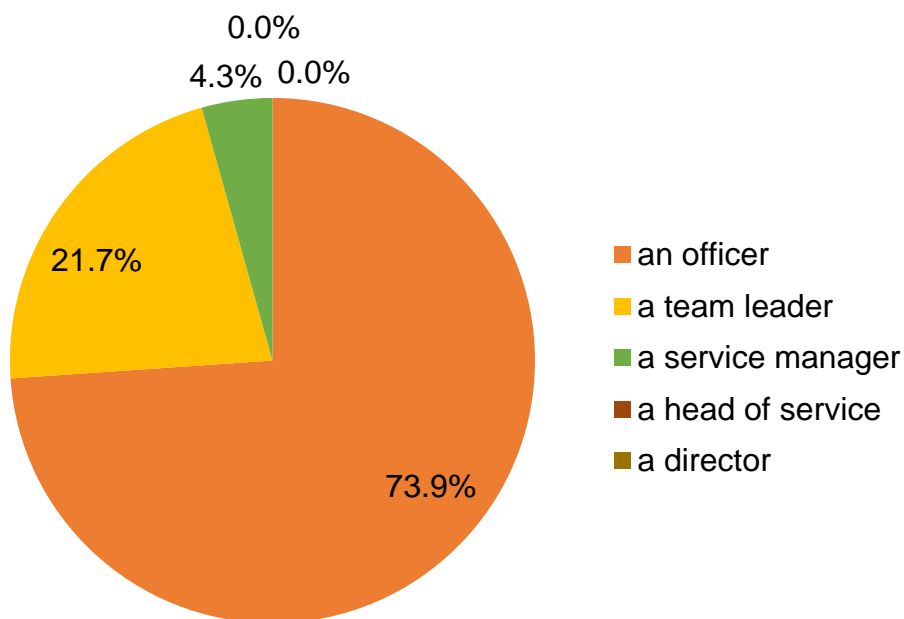
The following questions were for district council staff and district councillors.

**Q28 Which service area do you work in?**

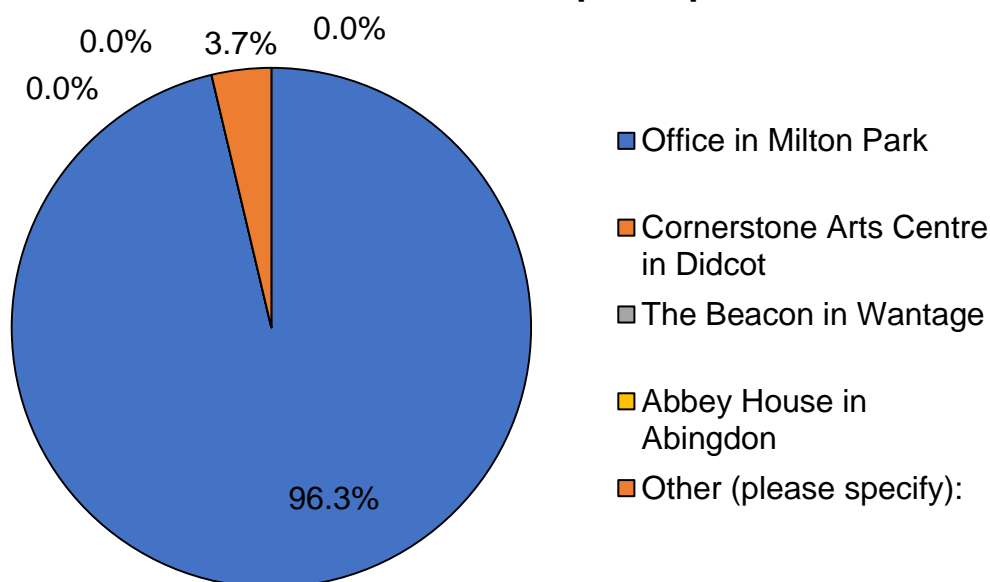




**Q29 Are you responding as:**



**Q30 Please indicate where you were based for most of your day to day work with the council before the COVID restrictions were put in place.**



**Other, please specify:**

- Home

## APPENDIX F – QUANTITATIVE DATA

**Q1. For each of the proposed six themes in the Corporate Plan, please tell how important you consider each one to be. You can use the sliding scale below by moving the scale left and right, with 1 on the left being least important and 5 on the right being most important.**

Item	Average	Min	Max	Std. Deviation	Total Responses
Theme 1: Homes and infrastructure that meet local needs	3.44	1.00	5.00	1.43	932
Theme 2: Improved economic and community wellbeing	3.61	1.00	5.00	1.28	932
Theme 3: Action on the Climate Emergency	3.67	1.00	5.00	1.44	932
Theme 4: Protect and restore our natural world	3.98	1.00	5.00	1.29	932
Theme 5: Investment and innovation that rebuilds our financial viability	3.28	1.00	5.00	1.29	932
Theme 6: Openness and accountability	3.90	1.00	5.00	1.34	932
				answered	932
				skipped	0



## Theme 1: Homes and infrastructure that meet local needs

**3. Your answers to this question will tell us which actions and projects identified to help achieve this theme are important to you. This will help us decide how best to prioritise our work and budgets over the next four years. How important are the following illustrative actions and projects to you?**

	Very important	Important	Neither important nor not important	Of little importance	Not important	Response Total
Didcot Garden Town priority projects as identified by the Advisory Board, specifically a sustainable plan to redevelop the Didcot Gateway site, a public transport and active walking and cycling network, community facilities and accessible green spaces for Didcot residents	27.1% (191)	35.3% (249)	22.2% (157)	7.1% (50)	8.4% (59)	706
The transformation of Berinsfield into a thriving Garden Village with improved facilities that are developed in line with the community's needs and aspirations	18.7% (131)	36.8% (258)	25.1% (176)	9.7% (68)	9.8% (69)	702
New council-owned homes with a focus on quality of design, affordability and local requirements	38.5% (276)	32.3% (231)	14.2% (102)	6.6% (47)	8.4% (60)	716
Support and encouragement for the retrofit of our existing housing stock for low-carbon performance and to eliminate fuel poverty	37.4% (270)	38.1% (275)	13.9% (100)	6.6% (48)	4.0% (29)	722
Elimination of homelessness in our District and bringing empty properties back into use	53.3% (384)	32.6% (235)	7.6% (55)	3.5% (25)	3.1% (22)	721
Ensuring that our teams are ready to access or signpost to any Government schemes or funding that is made available	31.7% (226)	41.4% (295)	17.5% (125)	4.9% (35)	4.5% (32)	713
New homes are future-proofed, meeting the highest environmental standards and enhancing nature through sensitive, high quality design	52.9% (381)	33.5% (241)	7.5% (54)	2.9% (21)	3.2% (23)	720
Spatial planning embeds public health, wellbeing and sustainability	52.1% (366)	29.4% (207)	12.9% (91)	3.7% (26)	1.8% (13)	703
Changes over time in our stock of homes meet local needs	26.6% (185)	42.2% (293)	21.6% (150)	4.9% (34)	4.7% (33)	695
Sustainable transport solutions prioritise walking, cycling and public transport to reduce car dependency and air pollution	54.0% (388)	24.5% (176)	10.7% (77)	5.3% (38)	5.4% (39)	718
					answered	732
					skipped	199

## Theme 2: Improved economic and community wellbeing

**6. Your answers to this question will tell us which actions and projects identified to help achieve this theme are important to you. This will help us decide how best to prioritise our work and budgets over the next four years. How important are the following illustrative actions and projects to you?**

	Very important	Important	Neither important nor not important	Of little importance	Not important	Response Total
Partner with regional agencies to ensure economic recovery, quality employment, thriving businesses and vibrant communities, avoiding the blight of "dormitory towns"	35.4% (224)	45.2% (286)	14.1% (89)	2.5% (16)	2.8% (18)	633
Provide advice on access to grants, training and diversification programmes, helping local businesses to build agility and resilience	26.4% (167)	48.7% (308)	18.8% (119)	4.6% (29)	1.6% (10)	633
Plan for communities connected by walking & cycling networks, with sustainable, accessible and affordable public transport and reliable Broadband, learning the lessons from the Covid-19 experience and enabling more home-working	56.4% (362)	30.7% (197)	7.0% (45)	3.0% (19)	3.0% (19)	642
Launch a new community wellbeing strategy to encourage and support culture, leisure and the arts	29.7% (188)	35.1% (222)	23.1% (146)	7.0% (44)	5.2% (33)	633
Use our planning powers to preserve our valuable green spaces, particularly in urban areas	74.9% (483)	18.6% (120)	3.9% (25)	1.2% (8)	1.4% (9)	645
Work with our communities to maximise Community Infrastructure Levy funds and to allocate these to achieve best outcomes for residents in the District	33.0% (205)	38.7% (241)	23.2% (144)	3.1% (19)	2.1% (13)	622
Take enforcement action on fly-tipping, dog fouling and other anti-social blights on our society	60.0% (383)	28.4% (181)	8.0% (51)	2.0% (13)	1.6% (10)	638
Work with local partners to introduce civil parking enforcement as a district responsibility	20.9% (131)	26.8% (168)	32.3% (202)	11.3% (71)	8.6% (54)	626
					answered	652
					skipped	279

## Theme 3: Action on the Climate Emergency

**9. Your answers to this question will tell us which actions and projects identified to help achieve this theme are important to you. This will help us decide how best to prioritise our work and budgets over the next four years. How important are the following illustrative actions and projects to you?**

	Very important	Important	Neither important nor not important	Of little importance	Not important	Response Total
Achieve our own zero carbon target by 2025 and support others to achieve the district target of zero carbon by 2030	47.5% (297)	32.2% (201)	10.9% (68)	4.6% (29)	4.8% (30)	625
Develop an annually approved climate emergency programme and adequately finance it	41.0% (254)	31.8% (197)	15.8% (98)	5.3% (33)	6.0% (37)	619
Deliver Council-owned net-zero homes and use grants, planning policy and advocacy to ensure the same standards throughout the district	42.1% (262)	31.7% (197)	15.0% (93)	5.1% (32)	6.1% (38)	622
Promote and encourage behavioural change with informational campaigns and leading by example	35.2% (218)	37.3% (231)	16.1% (100)	5.5% (34)	6.0% (37)	620
Take positive action on single-use plastics, air quality improvement measures and sustainable transport	56.5% (351)	28.8% (179)	8.5% (53)	2.6% (16)	3.5% (22)	621
Mitigate climate change through planning and land use, enhancing biodiversity on our own land and strengthening the planning system to enforce environmental standards	54.8% (338)	31.0% (191)	8.8% (54)	1.9% (12)	3.6% (22)	617
Promote the circular economy (reduce, re-use and recycle), including in our waste management contracts	55.4% (346)	36.0% (225)	5.8% (36)	0.8% (5)	2.1% (13)	625
Support and encourage local businesses to respond to climate change and nature recovery	41.0% (253)	40.0% (247)	12.0% (74)	3.6% (22)	3.4% (21)	617

**9. Your answers to this question will tell us which actions and projects identified to help achieve this theme are important to you. This will help us decide how best to prioritise our work and budgets over the next four years. How important are the following illustrative actions and projects to you?**

	Very important	Important	Neither important nor not important	Of little importance	Not important	Response Total
Promote waste minimisation initiatives such as Repair Cafés	39.5% (244)	37.7% (233)	16.8% (104)	2.1% (13)	3.9% (24)	618
Work with Oxfordshire County Council to build on our commitment to active travel including walking, public transport and cycling infrastructure	53.3% (331)	29.0% (180)	9.8% (61)	2.9% (18)	5.0% (31)	621
					answered	631
					skipped	300

## Theme 4: Protect and restore our natural world

**12. Your answers to this question will tell us which actions and projects identified to help achieve this theme are important to you. This will help us decide how best to prioritise our work and budgets over the next four years. How important are the following illustrative actions and projects to you?**

	Very important	Important	Neither important nor not important	Of little importance	Not important	Response Total
With partners, promote in-depth mapping and surveying of ecosystems across the district, planning for restoration of the natural world and working closely with land-owners and specialist agencies	42.9% (264)	39.8% (245)	11.4% (70)	3.7% (23)	2.1% (13)	615
Celebrate, protect and enhance our natural assets, including the River Thames and the AONBs and their setting, promoting our rural district for tourism, leisure and wellbeing	54.2% (332)	35.7% (219)	7.5% (46)	1.1% (7)	1.5% (9)	613
Encourage the use of natural processes to combat risks arising from climate change, such as meadows and trees to reduce flooding	58.8% (361)	31.4% (193)	6.8% (42)	1.1% (7)	1.8% (11)	614
Recognise and support the vital role of farming in economic and ecosystem resilience, local food provision and the recovery of soils and natural processes	58.3% (358)	31.6% (194)	7.5% (46)	1.1% (7)	1.5% (9)	614
Call for the establishment of a Local Nature Partnership for Oxfordshire to promote an ambitious nature recovery programme, including tree and meadow planting, rewilding and providing habitats for wildlife including wildlife corridors	51.4% (313)	30.0% (183)	12.0% (73)	3.6% (22)	3.0% (18)	609
Work in partnership with the Earth Trust, Chilterns Conservation Board, North Wessex Downs AONB, the Environment Agency and others to improve access to green spaces in and around our towns, reinforcing access to nature as a priority for community wellbeing	53.9% (328)	32.9% (200)	9.0% (55)	1.8% (11)	2.3% (14)	608
					answered	621
					skipped	310



## Theme 5: Investment and innovation that rebuilds our financial viability

**15. Your answers to this question will tell us which actions and projects identified to help achieve this theme are important to you. This will help us decide how best to prioritise our work and budgets over the next four years. How important are the following illustrative actions and projects to you?**

	Very important	Important	Neither important nor not important	Of little importance	Not important	Response Total
Develop and implement an innovative Transformation Strategy to diversify our revenue streams, improve our effectiveness and secure our on-going viability	25.2% (145)	43.8% (252)	23.5% (135)	4.7% (27)	2.8% (16)	575
"Invest to save" for the District, including the delivery of sustainable new Council offices – on time and within budget – to realise future operational efficiencies	23.4% (136)	34.0% (198)	23.0% (134)	9.5% (55)	10.1% (59)	582
Exercise strong Stewardship of all Council assets including property and financial investments, optimising their performance for the benefit of our residents	42.5% (251)	40.2% (237)	12.7% (75)	2.5% (15)	2.0% (12)	590
Maximise external funding opportunities to support our services and to enrich our leisure, sporting and community activities	40.4% (239)	39.9% (236)	13.3% (79)	2.9% (17)	3.5% (21)	592
Invest responsibly and ethically with the Climate Emergency at the heart of what we do	42.9% (255)	33.9% (202)	12.4% (74)	5.5% (33)	5.2% (31)	595
					answered	603
					skipped	328

## Theme 6: Openness and accountability

**18. Your answers to this question will tell us which actions and projects identified to help achieve this theme are important to you. This will help us decide how best to prioritise our work and budgets over the next four years. How important are the following illustrative actions and projects to you?**

	Very important	Important	Neither important nor not important	Of little importance	Not important	Response Total
Enhance trust and accountability in democratic decision-making, including live-streaming and recording of meetings, ensuring full accessibility of facilities and monitoring progress in an open and transparent way	45.3% (268)	41.6% (246)	10.3% (61)	2.2% (13)	0.5% (3)	591
Ensure that council departments work collaboratively to deliver best outcomes for residents	57.5% (338)	38.3% (225)	3.7% (22)	0.2% (1)	0.3% (2)	588
Embed an organisational culture that celebrates diversity, inclusion and respect	41.7% (245)	36.3% (213)	14.7% (86)	4.3% (25)	3.1% (18)	587
Apply good governance and transparency in all our working and decision-making, exploring optimal structures and mechanisms for best practice in local government	47.6% (280)	41.2% (242)	9.0% (53)	1.4% (8)	0.9% (5)	588
Engage effectively with residents, Parish and Town Councils and other community organisations, using plain English in our communications and using appropriate methods and technologies to ensure equal and fair access for all	64.0% (380)	29.8% (177)	4.7% (28)	0.8% (5)	0.7% (4)	594
					answered	600
					skipped	331

**END**